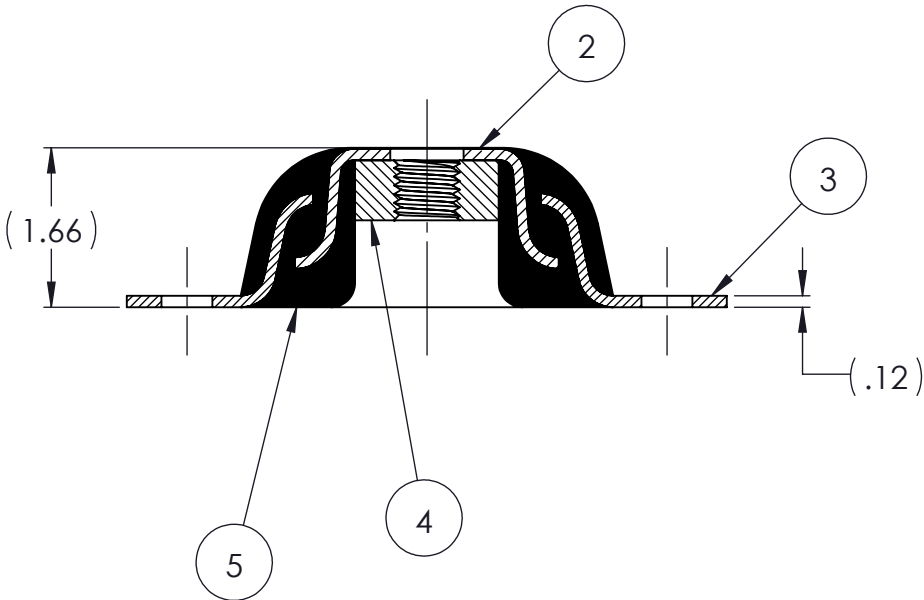
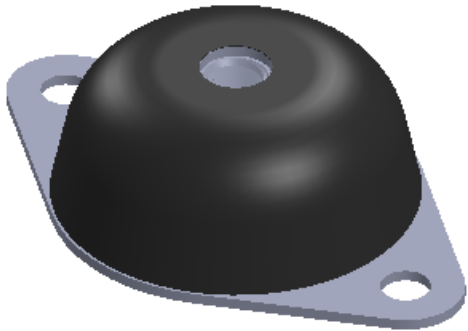
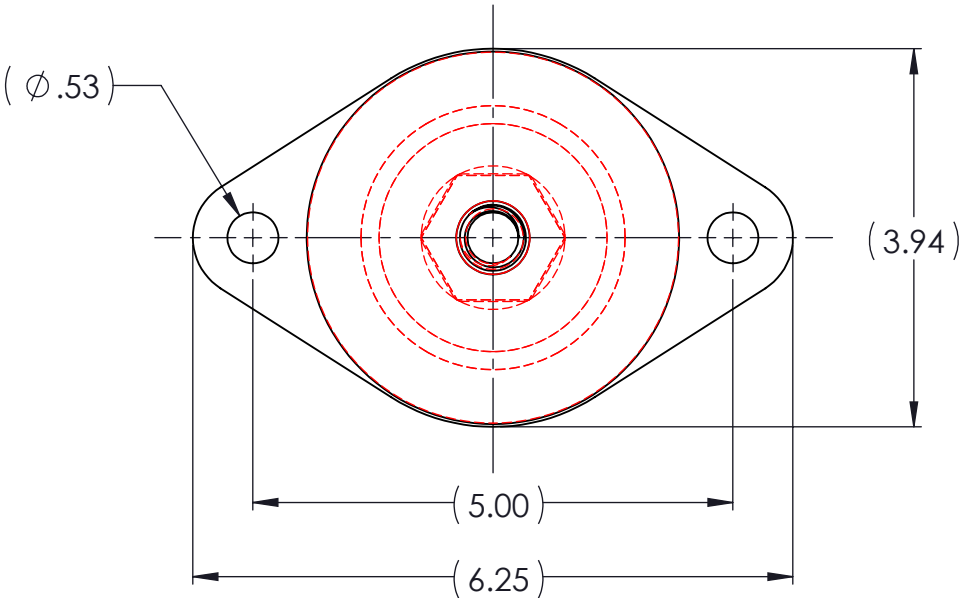


REVISIONS			
REV.	DESCRIPTION	DATE	APPROVED
1	INITIAL RELEASE OF DRAWING	9/24/2014	BS



NOTES:

- 1 MATERIAL: ELASTOMER AND DUROMETER OF 40, 50, 60 OR 70 TO BE SPECIFIED.
- 2 ALL DIMENSIONS ARE REFERENCE.
- 3 AVAILABLE WITH THREAD OF 5/8-11 UNC.

PROPRIETARY AND
CONFIDENTIAL
THE INFORMATION
CONTAINED IN THIS
DRAWING IS THE SOLE
PROPERTY OF
KARMAN RUBBER. ANY
REPRODUCTION IN PART
OR AS A WHOLE
WITHOUT THE WRITTEN
PERMISSION OF
KARMAN RUBBER
IS PROHIBITED.

SIGNATURE		DATE
DRAWN	B. SENECAL	09/24/2014
CHECK	S. BROWN	09/24/2014
ENGR	B. SENECAL	09/24/2014
QA		
STRESS		
APPR		

UNLESS OTHERWISE SPECIFIED:
DIMENSIONS ARE IN INCHES
TOLERANCES:
.X =
.XX = ± 0.031
.XXX =
ANGLES = $\pm 1^\circ$
INTERPRET GEOMETRIC
TOLERANCING PER:
ASME Y14.5M-1994



SIZE B	CAGE CODE	DWG. NO. K620-CS		REV 1
		SCALE: 1:2	WEIGHT: 4.5 OZ.	SHEET 1 OF 1

AR	ELASTOMER	K620-CS-5	1	5
1	MK620-CS	MK620-CS		4
1	MK620B	MK620B		3
1	MK620-A	MK620A		2
	K620-CS	K620-CS		1
QTY.	DESCRIPTION	PART NUMBER	MATERIAL OR NOTES	ITEM